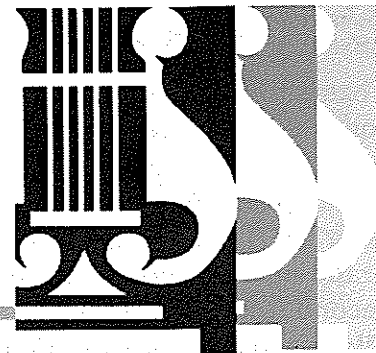


Calliope



Newsletter of the Langley Community Music School Winter 2001
4899 - 207th Street, Langley, BC V3A 2E4 Phone: 534-2848; Fax: 532-9118
Editor: Kathy Bjorseth Production: Gene Homel

It's Time to Celebrate!

Break out the champagne and pop the corks! We are celebrating the building of our "new space" with a gala concert on **March 11. "2001: A New Space Odyssey"** will feature a programme of orchestral favourites, pianistic fireworks and the world premiere of a work for orchestra by renowned B.C. composer, **Michael Conway Baker**, commissioned for the occasion by the Langley Community Music School. This concert is our way of saying "thank you" for your support, and sharing with you our excitement on the building of our new facility.

We are fortunate to be able to present the **Vancouver Youth Symphony Orchestra** and the **LCMS Senior Strings**, under the direction of **Arthur Polson**. They will open the programme with two "chestnuts" - the lively **Roman Carnival Overture** by **Hector Berlioz**, and the popular **Grand Canyon Suite** by American composer **Ferde Grofé**.

Next, we welcome back with pride and affection LCMS Alumnus and former Langley resident, **Lila Gailling**, who will play the dazzling showpiece by **Sergei Rachmaninov**, *Rhapsody on a Theme of Paganini* for piano and orchestra. Lila has recently

completed graduate studies in piano performance at the Royal College of Music, and is pursuing a busy musical career in London, England. The programme will finish with the commissioned work for youth orchestra by **Michael Conway Baker** entitled *A Challenge for the Future*. This piece describes a musical journey, through challenges and difficulties, ending in triumph. **Michael Conway Baker** has composed over 80 film, television and video music scores and over 110 concert works, and has won many awards for his recordings and sound-tracks.

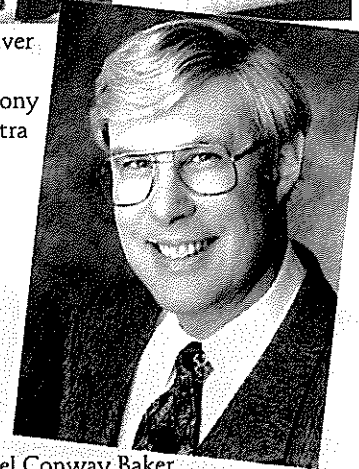
Please join us for a wonderful afternoon of music and celebration, **March 11 at 2:30 p.m., at the Chandos Pattison Auditorium, 10238 - 168th Street, Surrey.** Tickets are "Reserved Seating," so purchase your tickets early for the



Vancouver
Youth
Symphony
Orchestra



Lila Gailling



Michael Conway Baker

best seats. Ticket prices are \$15 for Adults, \$12 for Seniors, and \$10 for Students 18 yrs. and under, and are available through LCMS and the Chandos Pattison box office - 582-7285.

INSIDE:

- Opening of new building set pg 2
- Music school "Grand" gift pg 6
- Leave an enduring legacy pg 5
- Concerts and events pg 3

We thank Tom Lee Music for its sponsorship of this newsletter issue

Opening of New Building Set for **March 26, 2001**

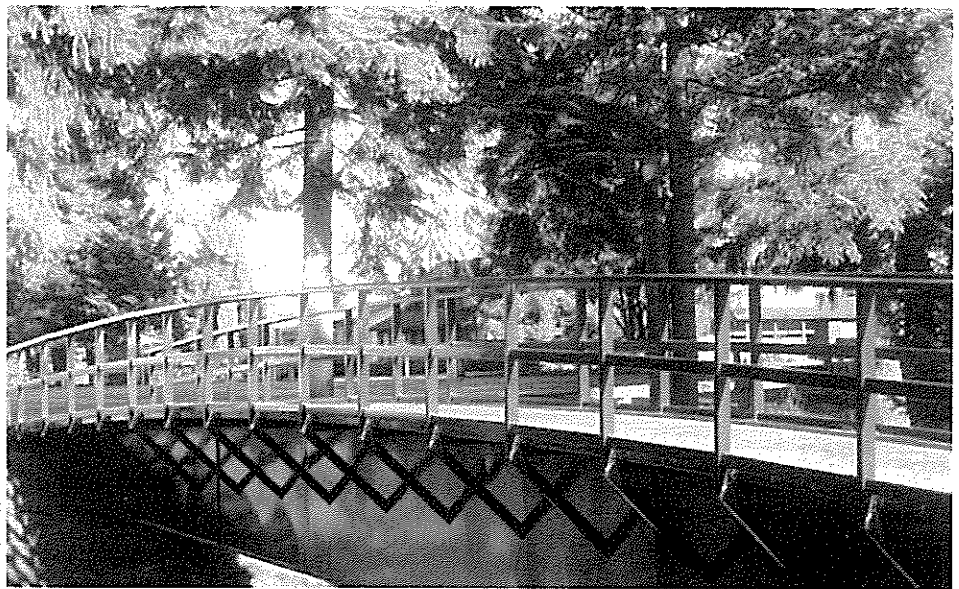
Thanks to a mild Fall and Winter, construction of the new School is right on schedule for a March opening. **Lessons will resume after the Spring Break at our brand new building, on the second floor, designated as the Olsen Music Education Centre.**

It has been a busy four months for Teck Construction and their sub-contractors as they finished closing-in the facility. The perimeter of the building has now been paved and large overhead lighting standards in the parking areas and on either side of the bridge have been installed. Inside, the metal frames for the interior walls are in place and the stairs have been framed in. Drywall installation and the remainder of the finishing work began on the interior in mid-January.



Mike Omelaniec

The beauty and dimensions of the finished building are really becoming apparent. The huge glass walls will allow for a wonderful view, particularly from the second floor. The waiting areas afford a view of the top of the Memorial Grove and the mountains beyond. The expansive lobby will look out onto a beautifully landscaped courtyard. Take a moment to have a look - you will be amazed!



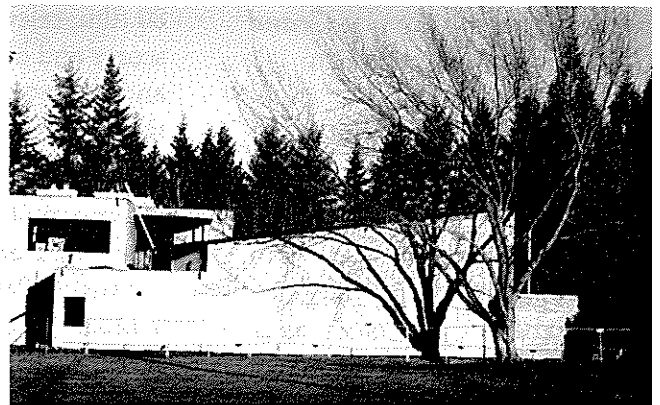
The **Rainbow** Bridge

When redevelopment of the old Music School site in City Park was discussed, issues around the creek that borders the north side had to be navigated. The new building had to be back several metres from the top of its bank. A bridge would have to connect the parking lot to the School and sports grounds to the south. The bridge needed to be well lit at either end for pedestrians and its footings well away from the stream it traversed.

This necessary addition to our building plans has been donated by **Mike Omelaniec** and a simple, beautiful bridge it is. The colour is Navajo Red, corresponding to the colour scheme of the new facility. It has an elegant curve to it, reminiscent of artist Claude Monet's bridge at Giverny, though it lacks the wisteria hanging from it. It is a gem of a creation, and beyond pedestrian use, it is a unique gift to City Park and Langley. Thank you, Mike!

Thank You to our "Hosts"

During these past months, as we "camped out" at our two temporary facilities, Bradshaw Elementary School and the Langley Mennonite Fellowship Church, we have been very fortunate in receiving help and support from many people. We would especially like to thank **Mac Petrie** and **Syd Stowe** in the Langley School District Office, Principal **George Main** and secretary **Pamela Fee** at Bradshaw School, and **Pastor Henry Krause** and **Marlene Unrau** at the Mennonite Church, for assisting us in so many ways. We truly appreciate all the extra things you've done to make these months easier for us.



Canadian Music Centre Composers' Workshop Set for March 31



We are very pleased that the first cultural function in our new building will be a workshop sponsored by the **Canadian Music Centre**. The Workshop will take place on Saturday, March 31, from 2:30 p.m. to 5:00 p.m. Students from the Langley Community

Music School will perform duets for voice and for various stringed instruments, and composers will work with them to help them better understand the music and develop their interpretive ideas. Composers who have written pieces for this workshop are **Arthur Polson, Murray Adaskin, J. Siddle, John Oliver and John Washburn**.



Peter Ewart: In Memoriam

The community has lost a wonderful, idealistic person in Peter Ewart the man, and an artist who earned the recognition and respect of many people who grew to love his paintings. His career spanned fifty-five years, most of them lived in the Lower Mainland.

Born in 1918 in Kisbey, Saskatchewan, Mr. Ewart grew up in Montreal where his family moved when he was a small child. Upon completion of his formal education, he studied art in Montreal, and later in New York. World War II interrupted these studies, and it was during service with the R.C.A.F. that he was stationed for a time in British Columbia. He decided that after his discharge, he would return to live and work in the province which had so impressed him with the variety and beauty of its scenery.

His paintings have been exhibited by the Royal Academy (London,

England), the Royal Canadian Academy, the Canadian National Exhibition and the Mid-Century Exposition of Canadian Painting. He had 39 one-man exhibitions, and his paintings are represented in numerous corporate and private collections in Canada and abroad.

Peter Ewart was involved in the founding of the Langley Community Music School in 1969. In addition to being a fine painter, he loved music and nature. He had a fine baritone voice, played the piano, and was a consummate story teller, father and friend.

Peter Ewart died quietly at home on January 23, 2001 and is survived by his loving daughter, Linda, of White Rock, B.C. One of Mr. Ewart's paintings has been donated by her and will be seen in the lobby of the new Music School building! The LCMS family extends its condolences to Linda.

Concerts & Events



Music Festival

Awards Concert

featuring **LCMS Scholarship Winners**

Sunday, February 18 2:30 p.m.
Langley Mennonite Fellowship Church
20997- 40th Avenue

Canadian Music Centre Composers' Workshop

Saturday, March 31
2:30 p.m. - 5:00 p.m.

Langley Community Music School
4899 - 207th Street

LCMS Celebration Concert

"2001: a New Space Odyssey"

featuring the **Vancouver Youth Symphony Orchestra** and LCMS Senior Strings with conductor Arthur Polson, piano soloist Lila Gailling and a world premiere by B.C. composer Michael Conway Baker

Sunday, March 11 2:30 p.m.
Chandos Pattison Auditorium

Pacific Academy
10238 - 168th Street, Surrey

Tickets \$15 Adults/ \$12 Seniors
\$10 Students

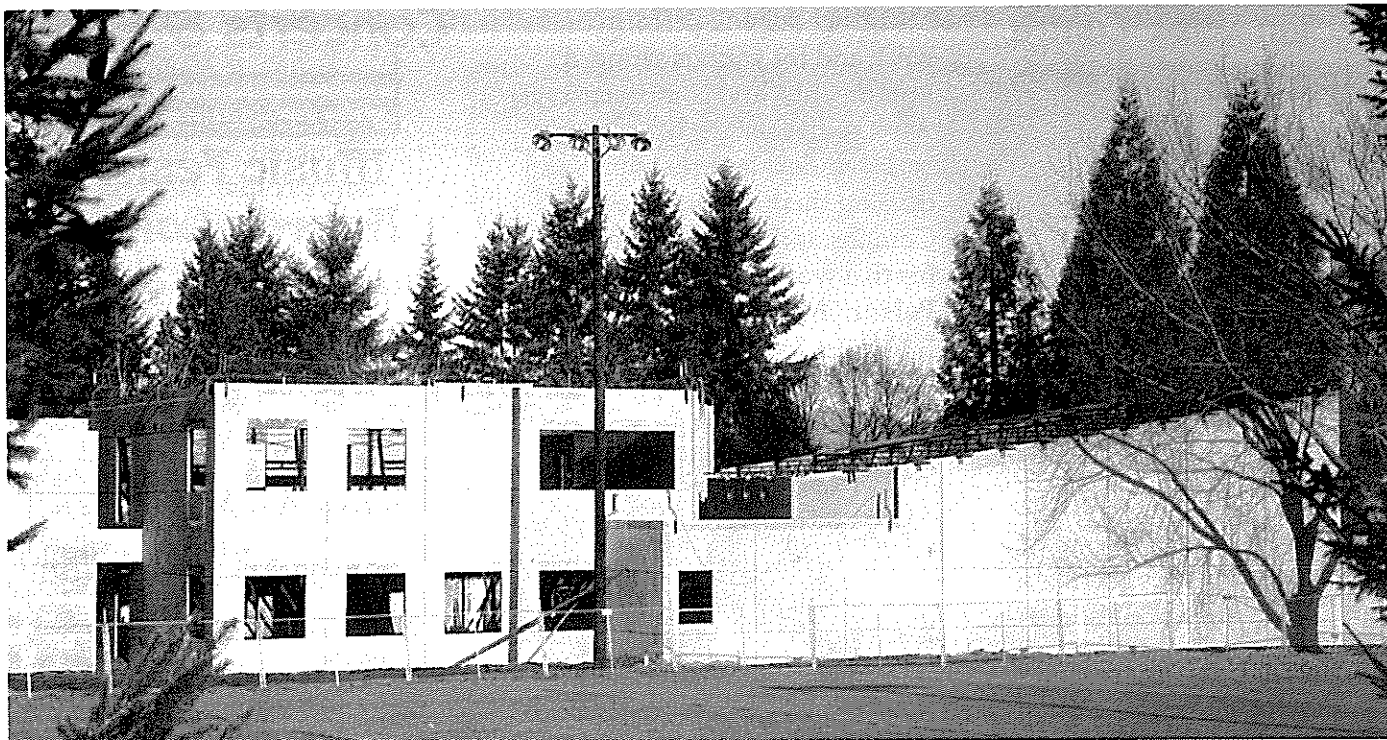
Available through LCMS (534-2848)
and Chandos Pattison
Box Office (582-7285)

LCMS "Grand" Opening Concert

The official opening our new Recital Hall and presentation of our Steinway Concert Grand

featuring a specially commissioned piece by composer Ramona Luengen.

Saturday, May 5 time TBA
Langley Community Music School



New Donations Are Adding Up

The campaign is continuing on its quest to raise the remaining \$300,000 required to meet our goal. In the last three months, we have been successful in acquiring \$25,000 in new pledges or donations.

In November, LCMS announced the official launch of the public phase of the campaign as part of the **Langley Central Rotary's** annual Wine Festival. Aubrey Searle, LCMS Campaign Chair, made the official announcement and accepted a \$10,000 cheque from David Taft, Wine Festival organizer; Bill Evans, Rotary President; and Marg Beaudoin of First Heritage Credit Union. This is the second of three installments on their \$30,000 pledge commitment.

Also in November, the **Langley Arts Council** presented LCMS with a cheque for \$50,000 at their monthly meeting. LCMS values greatly the close relationship we have had with the Langley Arts

Council over the years, and we are very thankful for their generous support of our Campaign. The cheque itself was a work of art - in the form of a violin, designed and hand-painted by Melissa Clark.

We continue to receive donations made to the School through the **United Way**, and **Telus** has introduced a special program for their employees this year. Telus will match employees' donations to LCMS, dollar for dollar. **We thank these organizations for their generosity.**



Jack Stetz, President of the Langley Arts Council, presents a cheque to LCMS.

Help Us Open Our Doors

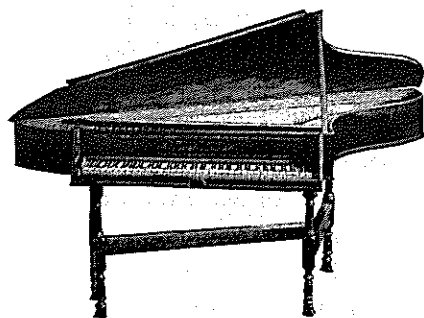
The Langley Community Music School is committed to providing the community with a centre where musicians of all ages can reach their full potential and enjoy the tremendous personal satisfaction that music can bring. It is vital to realize that the School is a non-profit society, and it relies very heavily on private fundraising and government grants to continue its operation and keep fees to students as reasonable as possible.

Our new facility will make us even more reliant on these fundraising activities, primarily undertaken by volunteers. It would be very advantageous if we could achieve our short-term goal of raising \$300,000, so that we would not have to carry a substantial mortgage, in addition to our normal expenses.

By contributing to our Capital Campaign, your name - your family,

your business or organization - will become a part of our history. The Langley Community Music School has a national reputation for excellence and innovation, and with our new facility, we will be able to contribute even more to the community.

Be a part of our success story. **Your contribution will make a difference.** There are payment options available to make giving convenient for you. Phone our Campaign Office at 532-0632 for more information. And thank you for your support.



The **Best Seat** in the House Is **Yours!**

We are getting excited about our 210-seat Recital Hall. This facility is sure to be a wonderful asset, not only to the Music School, but to the whole community. The Hall will be able to satisfy the needs of many groups, with its ample parking, central location in beautiful City Park, access for disabled people, flexible seating and a wonderful stage area complete with a magnificent 9 ft. Steinway grand piano.

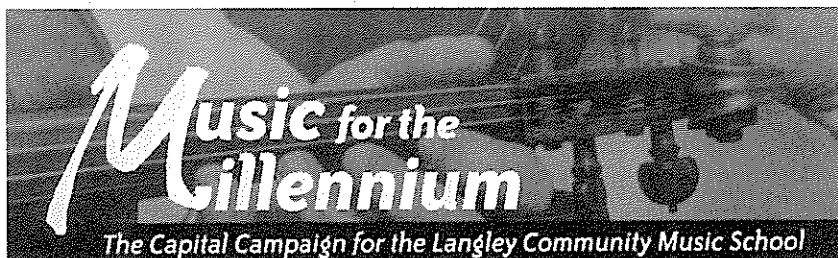
You can be a part of this legacy to the community by sponsoring one of these 210 seats. For a tax-deductible contribution of \$500, your gift will be acknowledged on a special donor recognition wall to be located in the Recital Hall. Your name, or the name of any individual or organization you choose, will be engraved on a permanent display.

Leave an **Enduring Legacy**

If you are interested in making a major donation to our Campaign, there are still some "Naming Recognition Opportunities" available. Generous donors have already sponsored our Recital Hall, Second Floor Instructional Area, Music Library, Faculty Room and Lobby Area. Sponsorships are still available for Teaching Studios, the Landscaped Courtyard, the Orchestra/Ensemble Room, the Performers' "Green Room," and the

Children's Music Centre, with amounts ranging from \$15,000 - \$75,000.

We are pleased to introduce naming recognition up to the \$14,999 level. You may "name" these areas in any way you wish, and be forever remembered by the many people who will use this facility in the future. Payment can be made over time, or in one payment. We welcome your inquiries on becoming a major donor at 532-0632.



PLEDGE FORM

Your gift to the "Music for the Millennium" campaign to build a new home for the Langley Community Music School will enable you to claim valuable tax credits every year that you contribute.

\$10,000 - \$19,999	"Benefactors"	Amount of gift _____
\$5,000 - \$9,999	"Patrons"	Amount of gift _____
\$1,000 - \$4,999	"Associates"	Amount of gift _____
\$500 - \$999	"Friends"	Amount of gift _____
Up to \$499	"Supporters"	Amount of gift _____
\$500 Recital Hall Seat		Amount of gift _____

Giving Method:

Annually Pre-Authorized Debit Monthly Post-dated cheques Other

Name: _____

Mailing Address: _____

Phone: _____ Fax: _____ Email: _____

Signature: _____ Date: _____

Please make cheques payable to the "Music for the Millennium" Campaign. Thank you for your gift to the Langley Community Music School.

LCMS Charitable Donation/Registration # 89138-9991-RR0001

BRITISH COLUMBIA



Marking The Millennium

We thank the province of British Columbia



BRITISH
COLUMBIA
ARTS COUNCIL

We acknowledge the support of the Province of British Columbia through the British Columbia Arts Council

LCMS Receives a "Grand" Gift

Susan Magnusson

When the Langley Community Music School opens its new facility this Spring, it will become the home of one of the world's most beautiful instruments - a 9 ft. Steinway Concert Grand Piano. This amazing instrument was a gift from **Ron and Sharon Stevenson**. A pianist herself, Sharon wanted to offer our students and the community an opportunity to experience an instrument as fine as any found in the major concert halls in the world. Steinway pianos are the choice of more than 90% of the world's concert pianists.

As soon as I received the news of this gift, I contacted **Chuck Gorling**, General Manager of the Piano Division at **Tom Lee Music**. I was delighted when he suggested that I really must go to New York, visit Steinway Hall, and choose from their inventory at the factory. This was the chance of a lifetime! An appointment was made for September 29, 2000 at 10:00 a.m. at Steinway Hall.

I had participated in selecting other pianos for the School, including the Yamaha S400 grand. Then, I was able to solicit the advice of other faculty members, and they were able to try out the piano before we purchased it. In this case, I would be the only faculty member flying to New York. Every Steinway grand is hand-built over a period of a year or more and although each one is magnificent, they all possess unique characteristics of sound and touch. I wanted to select a piano that everyone would love.

I decided to contact **Jon Kimura Parker**, our Honorary Patron and an internationally renowned concert pianist - a "Steinway Artist." Since Jon lives in New York, I hoped he would be able to assist in the selection. An e-mail was sent, but several weeks went by without a response. I wasn't surprised, knowing how incredibly busy he is and how much travelling he does, but I began to think that perhaps I had made an unreasonable request.

available for him on Tuesday, he might be able to drop by and try them out. He could not promise, because he already had a full day ahead of him and he was babysitting his 16-month old daughter. He asked that I phone him in the morning, as he had just returned from playing two concerts in other parts of the U.S. and was going to bed earlier than usual. (I noticed that he called at midnight, New York time.)



Susan Tang, Sharon Stevenson, Susan Magnusson

I was on the phone to Steinway & Sons by 6:30 a.m. to explain the situation. By 8:00 a.m. I received the word from New York saying that there would be only one hour available, between noon and 1:00 p.m. *that day* for Mr. Parker to try the pianos. I immediately called Jon. It was 11:00 a.m. in New York, so I explained to him that there was obviously no chance for him to reach Steinway Hall within the hour at this short notice, but that I would appreciate if he would call Steinway to let them know of his association with our school.

With only one week left before our departure, I felt that I had to ask one more time, but this time only for a photo opportunity. On Monday, September 25, I arrived home after teaching to hear a phone message from Jon Kimura Parker. He said, "Hello Susan, I hope I now have the right number." He said that he would be leaving for a concert tour on Wednesday morning and unfortunately would not be able to join us at Steinway Hall on Friday. However, if Steinway could make the pianos



You can imagine my surprise when my email had a message from Jon Kimura Parker. It began: "I made it into Steinway for about 15 minutes - here's what I tried ..." He had tried five pianos, listed the serial numbers and his description and ranking of each one. He added, "...and don't by ANY means feel compelled to pick the one that I liked." I was ecstatic! Now I could leave with the assurance of a Steinway Artist tucked in my bag.

We arrived at Steinway Hall for our 10:00 a.m. appointment and were greeted by Susan Tang, a former student of mine now studying at Eastman School of Music in Rochester, New York. I had invited Susan to help us select our piano. I was determined that we would go through the selection process without looking at the serial numbers and Mr. Parker's choice, just to see if we agreed.

What an incredible experience, to compare five Steinway concert grands. I would play, then Susan and Sharon would play. We'd listen and share comments. To quote Robert Taub, Artist-in-Residence at the Institute for Advanced Studies at Princeton University, "With the modern Steinway, the fullest spectrum of sound and palette of tonal colour can be at one's disposal. The Steinway is capable of not only large sonorities but also the softest and most intimate whisperings." Susan, Sharon and I were overwhelmed by the beauty of these instruments and amazed at the uniqueness of each one. We gradually eliminated three of the five. The two remaining were both outstanding instruments but one was especially great and incredibly responsive. I now had to compare our choice with that of Jon Kimura Parker. It was unanimous! The serial number matched Jon Kimura Parker's favourite of the five pianos.

Again, I was very relieved to know that a professional Steinway Artist agreed with our choice.

Sally Coveleskie, Steinway Institutional Manager, very graciously invited us on a tour of the Steinway factory. After much picture-taking and expressions of gratitude, we left the business part of our trip behind and set out to enjoy New York City. We visited Carnegie Hall, Lincoln Centre, saw "The Lion King" on Broadway and toured the Statue of Liberty. We packed as much as was humanly possible in our three day visit.

We wait with great anticipation the completion of the Recital Hall to welcome our Steinway to its home in Langley. We hope to celebrate this "**Grand Occasion**" on **Saturday, May 5, 2001**, in our very own **Recital Hall**. The School has commissioned composer **Dr. Ramona Luengen** to write a piece for solo piano to commemorate the presenting of this instrument to the Music School and the community. We have extended an invitation to Jon Kimura Parker to join us for this exceptional celebration. We hope that you'll join us as well.

There are no words to express adequately the gratitude we feel to **Ron and Sharon Stevenson** for their gift. Through their generosity and vision, the Langley Community Music School will have in its Recital Hall an instrument that any major concert hall would envy. The potential will exist to develop the Recital Hall into a highly desirable concert venue. Pianists will have the invaluable experience of playing an instrument that will truly inspire their music-making, and those pianists who aspire to professional careers will be able to work with an instrument that they will encounter in concert halls around the world.

Just imagine the wonderful performances to come.

Michael Conway Baker



By Ian Hampton

Many months ago when we were planning our "Music for the Millennium" concerts, we agreed that of course we would end the series with a celebration, coinciding with the culmination of our project the opening of the new building. Part of that programme would feature a premiere of a work commissioned by the School. We wanted it to be upbeat, colourful and inspirational. We also hoped that the music would honour the aspiring rising generation in its effort to achieve beyond the ordinary to a brighter world. The natural choice was the B.C. composer, Michael Conway Baker, whose music has set the scene for so many outstanding events.

Now in his sixties, Michael's opus numbers have climbed to 118 with a recent harp concerto and promises to outnumber the total works of Beethoven! Michael's music covers all genres. He has written scores for the Vancouver, Toronto, London (UK) and Munich Symphonies and writes extensively for TV and film (notably the Disney studios) and is the recipient of Juno, Genie and Gemini Awards. Even if you hadn't realized it, you are probably familiar with Michael's music. It is played regularly on the CBC and on screens large and small, and some of you probably heard it when you visited Expo '86.

Michael has written us a rip-roaring work, sixteen minutes long for full orchestra called "*A Challenge for the Future*" and the piece amply fulfills our greatest expectations in celebrating our new School.

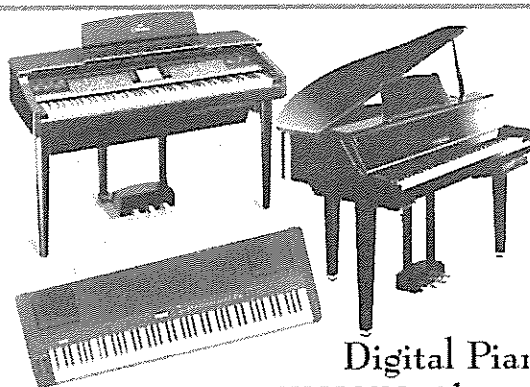
TOM LEE

Think Music... Think TOM LEE!

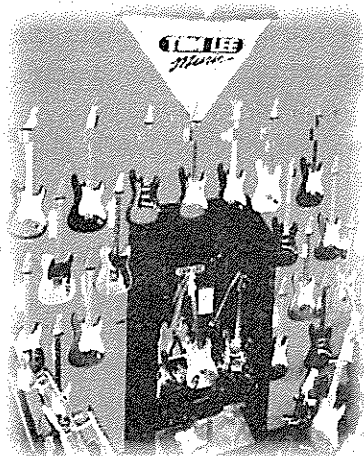


YAMAHA • PETROF
STEINWAY & SONS
BOSTON

Acoustic Pianos,
Plus (Disklavier • MIDI • GranTouch)



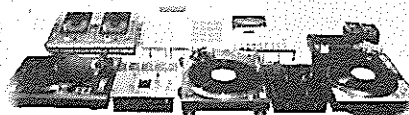
Digital Pianos
YAMAHA Clavinova
No.1 by Choice



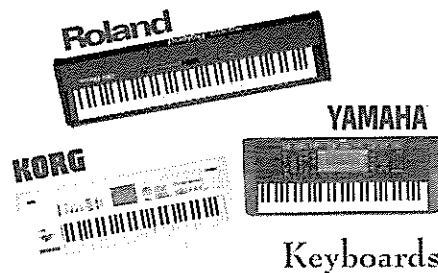
Electric Guitars & Amps



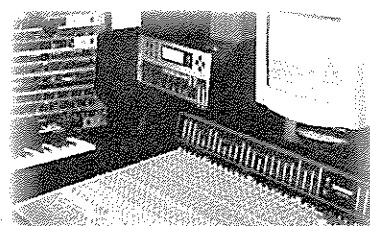
Acoustic Guitars



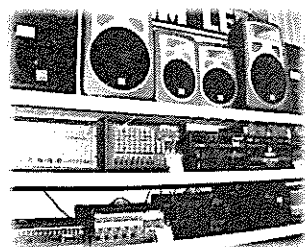
D.J. Equipment



Keyboards



Pro - Recording



Live Sounds



Percussion



Band Scores, Print
Music & Gifts



Band & Woodwinds
Strings

VANCOUVER

929 Granville St., (604) 685-8471
(2 hours FREE Parking for retail customers)

RICHMOND : 3631 No.3 Road (604) 273-6661
COQUITLAM : 2635 Barnet Hwy., (604) 941-8447
SURREY : 10090 - 152nd St., (604) 588-3200
LANGLEY : 19638 Fraser Hwy., (604) 532-8303

Toll Free : 1-888-8TOMLEE(8866533)

Web: <http://www.tomleemusic.ca>

Email : music@tomleemusic.ca

